

EAC

EST. 1921
EDMONTON ART CLUB
edmontonartclub.com



in this issue...

- feature artist *page 2-3*
- show and tell *pages 4-6*
- member profile *page 7*
- a place to visit *page 8*
- appreciation *page 12*
- members only*
- meeting minutes *pages 13 - 14*
- committee phone list *page 15*

cover: Skippy's sister caught munching at the Whitemud Ravine, photo by Rob Guétré



Alberta
Foundation
for the Arts

Lori Frank



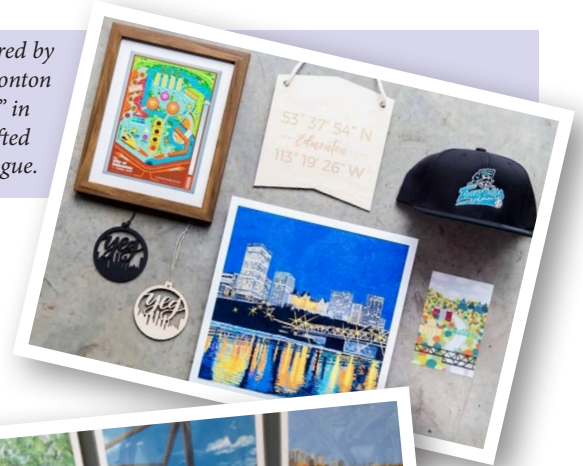
The super popular lit skating path, the Victoria Ice Way Skating Trail, by the Victoria skating oval.

Lori Frank is a fine artist that has been specializing in acrylics for the last several years. While she describes her unique painting style as *impressionistic realism*, it has also been described as *pointillist*. Lori made strategic decisions throughout her corporate career that brought her one step closer to finally being able to pull the pin and pursue her art. She finally did so in 2013 and hasn't looked back. She lives and creates over the Edmonton river valley and so the natural subject for her to paint is one that she has always loved the most about Edmonton: our valley. Fast forward almost eight years; she has displayed her work at various exhibits including City Hall, the Muttart Conservatory, the Jubilee Auditorium, the Milner Gallery and had a pop up gallery outside at the City Market on 104 Street for many years.



"Passing Through", a painting of the Walterdale Bridge

Featured by "Edmonton Made" in the gifted catalogue.



A greeting card of my painting "Starting Home"



FEATURE ARTIST

Through painting the landscapes of her ongoing Edmonton series of the river valley, Lori feels close to the land and has a special bond and reverence for it.

“It is really important for individuals, cultures, neighbourhoods, and cities to see themselves reflected in culture and art and this is what my art does,” says Lori, “It helps deepen our sense of identity, our sense of belonging, and it also feels good to know someone recognizes and sees the same beauty in their surroundings that you do.”



Here I am getting interviewed by Bridget Ryan of City TV at the Paint Spot to promote the upcoming art walk.



This is a cute photo from my pop up gallery on 104 street that I used to be a vendor at. These 2 paintings are part of my “Stairway to Heaven” series of Edmonton’s river valley.

The first thing you’ll notice about Lori Frank’s art is how vivid it is. The Edmonton artist doesn’t just replicate the city’s well-known landmarks in her artwork – such as the River Valley or Legislature Grounds – she brings them to life on canvas with the intensity of a thousand blazing suns. Indeed, it may appear that someone just turned up the brightness on your screen tenfold, but Frank’s paintings have that effect, bringing a pop of colour to wherever they are displayed.

If you’re looking to add some colourful art to your home, you can browse and order through her website, www.lorifrank.ca. And if you have a specific spot in mind that Frank hasn’t painted, you can also request custom artwork depicting your special place in Edmonton.

You can also browse her art on her Instagram page [lorifrankfineart](https://www.instagram.com/lorifrankfineart), or her Facebook page [Lori Frank Fine Art Studio](https://www.facebook.com/Lori-Frank-Fine-Art-Studio).

Adapted from www.lorifrank.ca

Chic Woodwork & Design

Customizable Home Décor

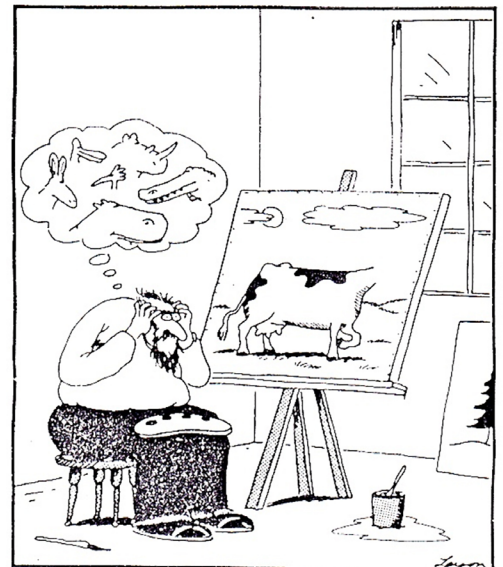
We are a fully customizable home décor company. We strive in creating wood into pieces of art for your home!

Tammy Pelletier
Owner

Dylan Schriener
Co-founder

780-271-3936

chicwoodworkdesign@gmail.com
[facebook/Chic Woodwork & Design](https://www.facebook.com/Chic-Woodwork-&-Design)
Edmonton / Spruce Grove / Stony Plain



The curse of “artist’s block”

SHOW AND TELL

Making Art!

SOMETHING TO LOOK FORWARD TO...
 Izabella Orzelski will be our art critic for the April meeting.



Penny Lamnek
Wildflowers (15"x30") watercolour. This is part of a series on wildflowers. Composition is difficult owing to the shape of the subject, and coming up with an interesting background is also challenging.



Barb Stachow
Male Hummingbird (5"x7") watercolour. The small size made this a challenge, getting all the details in.



Marge Somkuti
On the Way Home (30"x22") oil. Done thickly using a painting knife, fingers, and brushes. I haven't used oils in a while. This is a rural Manitoba scene.



Sharon Bongers
Cheetah (17"x14") graphite. Originally meant to be coloured but applying fixative to it prevented that from happening. Pretty happy with it.



Jan Fraser
Prairie (12"x12") acrylic on wood. The grass is molded with modeling paste. I tried to unify the colours by adding a touch of yellow to the clouds, and as it is the colours used are complimentary.



Jenny Rodrigue
Blue Shreddies (16"x20") acrylic. This was fun to do. Scene is from north of Clearwater, BC. Aside from the blue tarps covering the haystacks, I was struck by the mist coming off of mountains.

< Frances Hessels
Patisserie (half sheet) watercolour. The sunlight in the scene struck me. The subject is challenging because a complicated background can compete with the subject's faces and I'm still not too happy with that brownish background.

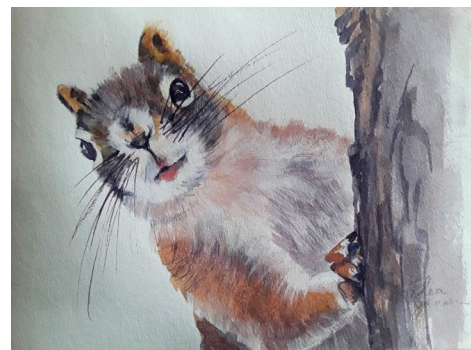
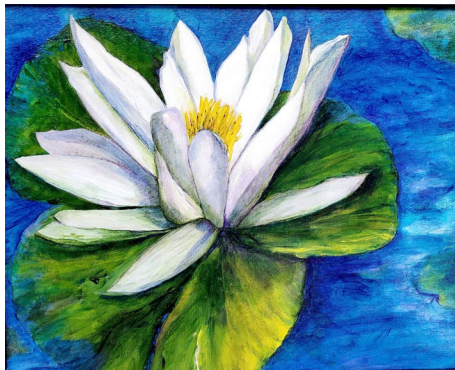


Ada Wong

Crashing Waves, watercolour. This is inspired by an artist friend who did a painting every day for 21 days. However, I gave myself 2 months. This is one of several scenes from Nova Scotia. They are mostly landmarks and some are quiet places. Not this one.

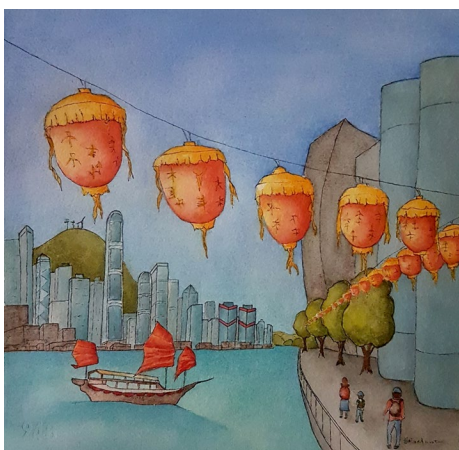
Seraya Smit

Water Lily, acrylic. This was a challenge because I do not normally do flowers. Started this one in 2000, and decided to finish it by adding a background and texture, which I really like the way it turned out.



Rhea Jansen

Skippy, watercolour. This is a small piece I painted as a birthday card for my sister who incidentally hates squirrels.

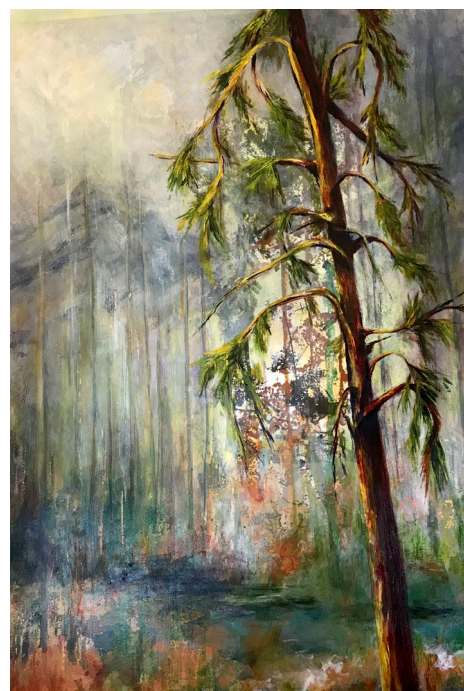


< Eleanor Macallister

Hong Kong Lantern Festival, watercolour. I used several reference photos and modified the composition quite a bit to come up with this scene.

Betty Dean >

Painted on one of six prints I made a while back, now serving as a background for the added tree. It is a work in progress, the challenge will be to work on the lighting on the tree trunk as well as some other elements.



Jake's Framing

10441 123 St, Edmonton, Alberta T5N 1N8 P: 780.426.4649 E: jake@jakesframing.com

Jake's Framing offers superior custom picture framing including museum grade picture framing, specialized mat-cutting, canvas painting stretching, dry-mounting, and engraving.

"I strive to provide the best customer service in the industry at a fair price. Please give me a chance to frame your artwork and I promise you won't be disappointed"

Jake Lewis Owner of Jake's Framing since 1993



Stanza Widen

Aspens. A mixed media piece including bits of wood, pebbles, lichen; expressing the stillness of the forest after a snow.



Connie Clarke

Windswept (12"x16") pastels. This is from a reference photo depicting a place near Drumheller. Wispy clouds and windswept grass tell the story.



Mona Innes

When the Wind Meets the Wheat. I'm using a glazing and layering technique. Depicting the moment just before the wind hits hard on the tall grass before the windstorm hits. Really pleased with it.

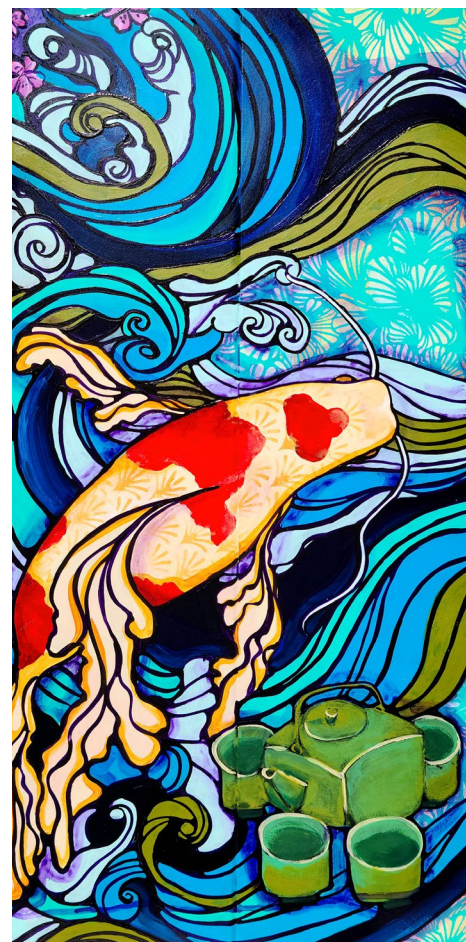


Ruth Bailey Baker

Mt Baker (12"x16"). The original scene was much more inspiring, clear with the mountain in the background. The weather came in before I could paint it, and everything was gone except for the sea. I am struggling with not overworking my painting.

Jani Galarneau

Japanese Themed Work. Only a part of the entire work which wraps around and above a garbage can. Depicting a cultural theme, in this case: Japanese.



< Ted Widen

"First Train", (24"x24"), oil on birch panel. The scene depicts Smithers, BC, when the first train arrived in 1913. Taken from several old reference photos, including one of the photographer. Frame is an authentic old window frame from the area.

Rob Guetre >

Just a Weed (12"x18") oil on panel. Inspired by bright sunlit seed heads on old withered stalks. Trying to keep it loose.



Richard St. Amant has been a member since 1984. He lives in Devon. He does not own a computer or a cell phone, but occasionally he visits the local library to visit his email account.

He built all the structures, including the fence surrounding his entire property, from interwoven branches, twigs and sticks. The main structure has two rooms, each with an independent wooden branch as a support beam. There is a “Tea House”, pictured above, as well as a storage structure at left.

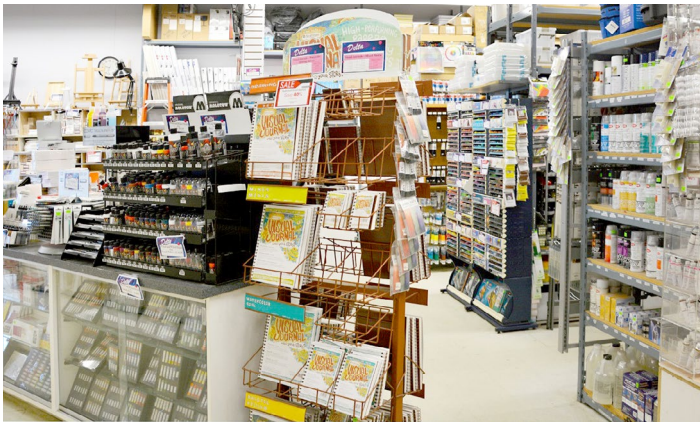
A PLACE TO VISIT

Delta Art and Drafting, located at 11116-120 Street in Edmonton, is owned by John Scott. He purchased the business in 1993, and at that time was not an artist, but his wife was. John has since become an artist and has made it his mission to become knowledgeable about all art products. The store carries art supplies for artists of all disciplines.

Over the years, the demands for manual drafting supplies has diminished and the demand for art supplies has increased, but a good variety of drafting supplies are still available in the store.

Delta Art and Drafting has the unique distinction of providing an extensive online ordering service shipping to all parts of the world, including Israel, Australia and South America. Here is the web page: <https://www.deltaart.ca/>

If you haven't visited the store for a while, you'll be pleasantly



surprised with the new renovations. It starts when you walk in the front door to an open and airy space with the checkout counter on the left and a brand new show room on the right, displaying new lines of art materials. All of the canvasses and easels are now in a room that the staff calls the "Canvas Cave".

The building, which has been home to Delta Art since 2006, has an architecturally stunning high, arched ceiling creating an open, modern industrial feel. As well as once being used to service rail cars, it was an archery club. If you look up, you can see an arrow still lodged in the ceiling.

Delta Art currently employs 21 staff of varying artistic disciplines, eager to assist you with any art project, endeavoring to find answers to all of your questions.

SAVE THE DATE

CARFAC will be offering a virtual session in May on how to photograph your artwork.



CARFAC
ALBERTA

How To Photograph Your Artwork

(with Blaine Campbell, hosted by Chris W. Carson)

tune in!
May 8, 1 - 2:30 pm

SCHOLARSHIPS

Both the Card/Alling and Mildred Nelson scholarships are being awarded this year. Myrna Wilkinson and Betty Dean are the scholarship committee and Sharon Moore-Foster will be the external juror and June critic.

- The **Card/Alling Scholarship** is for studies in watercolour and generally two scholarships of \$2000.00 each are given annually.
- The **Mildred Nelson Scholarship** is for studies in mediums other than watercolour and generally one scholarship of \$1000.00 is given annually.

Scholarships will be presented at the June 10 meeting, likely on Zoom.

All applications must be submitted virtually, so please be sure your photos show well on line. Section E of the application gives the specifications for submissions but please note that you do not need to provide the photos in hard copy. Send application form and photos only via email to me at marydean@telus.net.

No member can receive both scholarships simultaneously. The receipt of a scholarship precludes the awarding of the same scholarship for ten years (during this 10 year period, the awarding of the other scholarship is permitted).

The application deadline for both scholarships is May 1, 2021. For more information on scholarship policy, and application form, see our web site, members only section.



Edmonton Art Club Celebrating 100 Years

1921 - 2021

The Edmonton Art Club is a professional association for visual artists with a mandate to promote the visual arts through exhibitions, special projects and arts advocacy. It is an environment of artists gathering to explore creativity.



Friendships are established, information is shared, opinions and ideas are exchanged in a supportive environment.



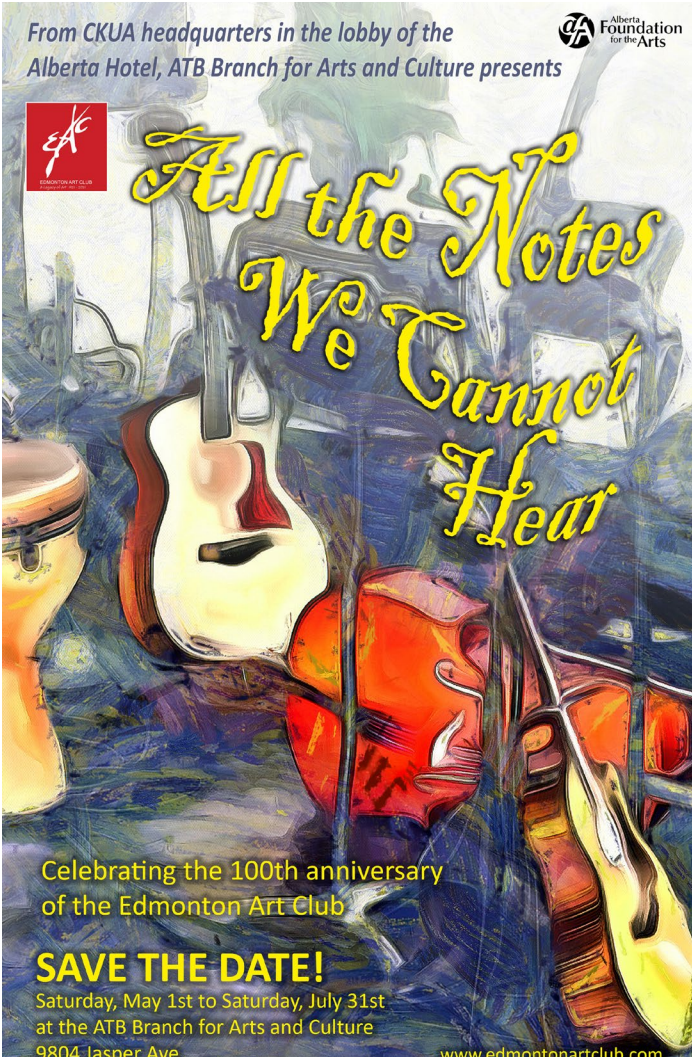
Artwork: J. Gordon Sinclair
"Tawatinaw Creek Country"

www.edmontonartclub.com

From CKUA headquarters in the lobby of the Alberta Hotel, ATB Branch for Arts and Culture presents

All the Notes We Cannot Hear



Celebrating the 100th anniversary of the Edmonton Art Club

SAVE THE DATE!
 Saturday, May 1st to Saturday, July 31st
 at the ATB Branch for Arts and Culture
 9804 Jasper Ave www.edmontonartclub.com

more information coming, visit our website!



ART SHOW

MISERICORDIA HOSPITAL

October 8 – December 3, 2021
 schedule (Admitting Hallway)
 16940 87 Avenue, Edmonton




LEADING EDGE ART WORKSHOPS



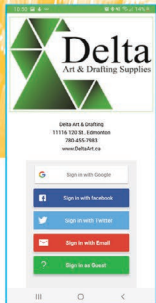
We still have a few spaces available in the Margaret Roseman and Linda Kemp workshops, and we have a FREE ONLINE WORKSHOP with the Golden representative on Sunday, May 16.

To see full details of this and other workshops please go to the Leading Edge website at www.greatartworkshops.com.

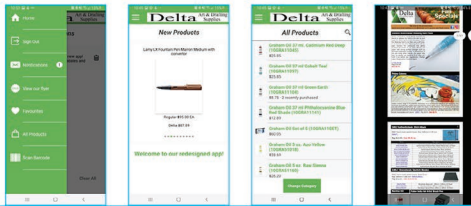
your one resource for

art supplies

PAINT • BRUSHES • MATT BOARD • PENCILS
PENS • SKETCH PADS • CANVAS • EASELS
AND MUCH MORE!



Check Out our App!!
Download our app and access our
vast selection of products anywhere



11116 - 120 street, edmonton, alberta
Ph: 780.455.7983 fx: 780.454.5204
e: info@deltaart.ca 1.888.455.1606

www.deltaart.ca



THE GILDED RABBIT

Art Supplies & Framing

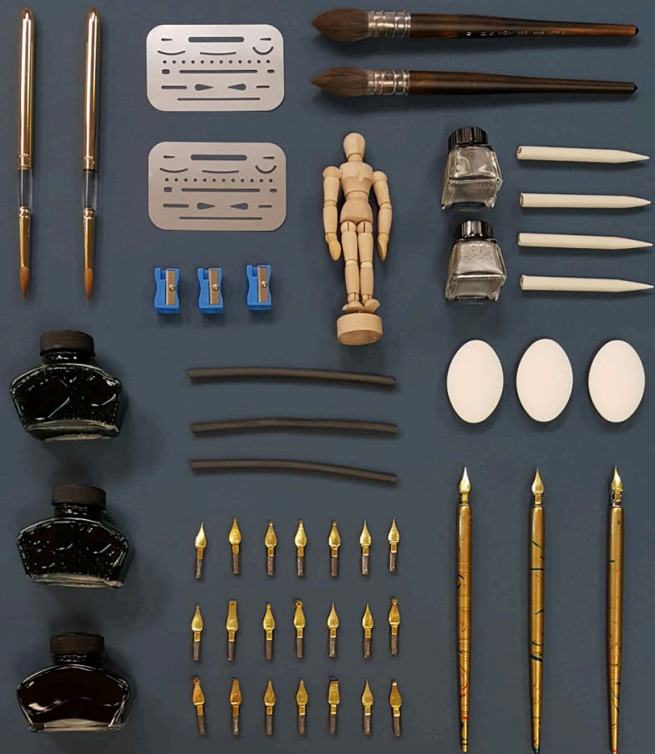
20% Discount for EAC
Members

10% Discount for All
Students and Seniors

10104 149 Street
780.481.6950
thegildedrabbit.ca

 @gilded_rabbit

 thegildedrabbit



THANK YOU!

Thanks to Colours, DeltaArt and Drafting Supplies, The Paint Spot, and the Strathcona Art Society for their on-going support in helping to distribute the EAC newsletters!

And thanks to the following businesses who give generous discounts to EAC members!



11116 - 120 Street NW, Edmonton



West Edmonton Mall
8882, 170th St NW, Edmonton



fine art materials
10032 - 81 Ave NW, Edmonton



10660 - 105 St. NW, Edmonton
7359 - 104 St. NW, Edmonton



10441 123 Street NW, Edmonton



Art Supplies & Framing - Discounts for students, seniors, and art memberships

10104 149 Street 780.481.6950 thegildedrabbit.ca



Alberta
Foundation
for the Arts

We're grateful to the Alberta Foundation of the Arts for their continuing support.

As the primary arts resource and grant funding body in Alberta, the Alberta Foundation for the Arts helps to unleash the potential of every artist through funding, arts promotion, and capacity-building. We provide behind-the-scenes support to artists and arts organizations, giving them the power to inspire minds, encourage expression, foster creativity, and contribute to Alberta's economy. From story time at local libraries to annual festivals on neighbourhood streets, the arts are active in your community. Albertans celebrate and support the arts as artists, volunteers, donors, and attendees at local arts events and activities. Experience, celebrate, and take pride in the arts—they're all around you!

Read more at affta.ab.ca/home.



CARFAC
ALBERTA

Visual Arts Alberta – CARFAC is a Provincial Arts Service Organization funded provincially and municipally that provide a communications hub between members of the visual arts community and the general public. Visual Arts Alberta – CARFAC is the affiliate for the national arts organization Canadian Artists Representation/Le Front des artistes canadiens

(CARFAC) in the province of Alberta.

CARFAC Alberta Office & Project Space:

3rd Fl., 10215-112 St., Edmonton, AB

Hours: Wednesday to Friday, 10–4pm and Saturday 12–4pm

t 780.421.1731 tf 1.866.421.1731

carfacalberta.com

general@carfacalberta.com